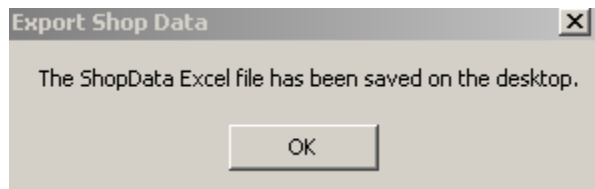
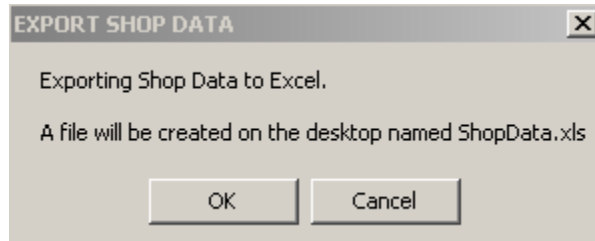


## EXPORTING SHOP DATA

This Utility Is Used To Format And Update Existing Databases. This Function Is An Advanced Export Of Parts And File Settings Of Your Database. You May Be Instructed By B2 Systems To Perform This Function To Configure Or Modify Your Existing Database.

To Use This Function Perform The Following Steps:



Simply Attach The Shop Data File On Your Desktop To An Email Address As Instructed By B2 Systems.